

# Wireless Receiver

## *User Manual*



## Guides You into a Harmonious World



### Note

※ If the contents of the description conflict,  
this page shall prevail !

## 2.4G Wireless Receiver

Thank you for using our wireless USB receiver, please read the following content carefully before using, it will help you make better use of this product.

### I .Introduction:

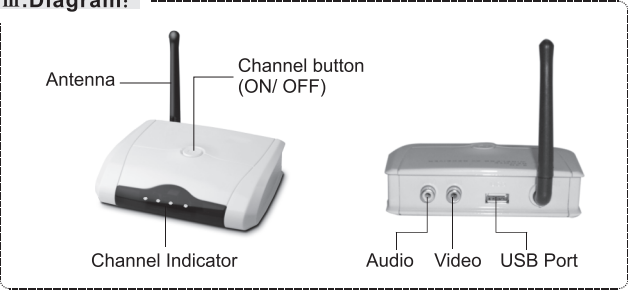
This wireless USB receiver works in ISM Band: 2400 ~ 2483MHz to receive wireless camera audio and video signals and displays the received image signal via PC. With our Monitoring System software, you can capture the image and video you are watching, and play back the data recorded. It can also be used as a regular receiver to convert the Video & Audio signals to normal monitor/TV. A simple switch from TV to AV on your television enables you to enjoy its capability for entertainment, monitoring and security purposes.

### II .Basic Specification:

- Support Windows XP & VISTA
- Support USB2.0
- Video and Audio
- ISM Frequency Band:2400~2483MHz
- Receiving Frequency:CH1=2414MHz,CH2=2432MHz, CH3=2450MHz,CH4=2468MHz
- Receiving Sensitivity: -85 dbm
- IF frequency: 480MHz
- Video Output amplitude:1Vp-p
- Audio Output amplitude: 2.5Vp-p(Max)
- High-speed image compression processing, display speed:30fp/s
- Resolution: 640x480; 320x240
- Power Supply:  
**PC Mode:** USB power, no power adapter;  
**Monitor / TV Model:** DC5V/800mA
- Dimension: 120x99x30mm
- Operating temperature: -10~50℃

## 2.4G Wireless Receiver

### III. Diagram:



### IV. Installation & How to Use

#### 1. Monitor / TV mode:

- 1) Connect the wireless cameras with the configured power adaptor and power on.
- 2) If two or more wireless cameras are installed at the same time, please keep a distance of 2 meters or more between the two wireless cameras, as well as between cameras and receiver too. Otherwise there might be signal interference between them so that will influence the image quality.
- 3) Turn the antenna of the receiver and make the antenna vertical upward in order to ensure the best reception.
- 4) Connect one end of the AV cable to the receiver's AUDIO and VIDEO output jack ,and the other side to the monitor / TV AUDIO and VIDEO input jack.
- 5) Insert the AC input plug of the power adapter (DC5V/800mA) into electricity socket, insert DC output plug into the receiver's USB socket. Turn on the main power, and then you will see the red mark on the

## 2.4G Wireless Receiver

receiver.

- 6) Turn on the monitor / TV power supply, change the monitor / TV to AV mode.
- 7) Receiver's button operation:
  - a. Power on: In the off state, one press on the button enables the receiver power on and the channel indicator LED turns on.
  - b. Switching channels: In the operation state, one press on the button enables to receiver jump into next channel.
  - c. Power off: In the operation state, press the button and keep more than 1 second. Release the button when the LED indicator turns off.
- 8) Adjust the camera lens if the image is not clear.
- 9) Adjust TV brightness, contrast, and color of the monitor to obtain the best quality images.

### 2. System Requirements:

	Minimum System Requirements	Recommended system requirements
Processor	Intel® Pentium® III 1.8 GHz	Intel® Pentium® 4 3.0 GHz
Memory	512 MB RAM	1024 MB RAM
Video Card	800 x 600, 16 Bit color	800 x 600, 24/32 Bit color
USB port	USB 2.0	
Operation system	Windows 2000 (including SP4 or higher), Windows XP (including SP2), Windows Vista	
Audio card	Windows Compatible	
Available hard disk space	50 MB	
DirectX support	DirectX 9	

### 3. How to connect USB receiver to PC

- 1) Connect USB receiver to PC by USB cable

## 2.4G Wireless Receiver

- 2) Windows will show new device found, according the new device guide to install, you can find the driver in CD
- 3) Open CD, install Speed DVR.exe
- 4) Run Speed DVR on desktop (need Key first time, you can find key at the bottom of the receiver)
- 5) Connect the cameras to power adaptors, then you can see pictures from software

### V. Speed DVR user manual

Welcome to use Speedsoft Speed DVR™. This video surveillance software is designed to meet your demands for security and surveillance purposes. Speed DVR provides security and protection for workplace, house, baby room, car, garage and so on. Speed DVR enables your computer to become a powerful monitoring system. Speed DVR supports remote monitoring in real-time and Multi-cameras displaying. Speed DVR enables to capture camera movements and save multi-media file formats in computer, search and manage the recorded data easily.

#### 1. Speed DVR function

- Motion detection
- Real time view and Recording
- Show 4 pictures at the same time
- Record video and audio both

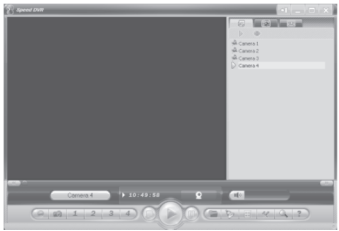
#### 2. Interface Basics

This section describes the various interfaces of the Speed DVR briefly.

##### 1) Speed DVR Main window

Speed DVR user interface contains Control panel part, Video display area part and Right-click menu part, Speed DVR enable you to manage recorded data and any content easily.

## 2.4G Wireless Receiver











Use Speed DVR Control Panel, you can easily access to allcommon functions program.

The following table describes all the features of Speed DVR control panel:

ICON	FUNCTION	DESCRIPTION
	Exit	Exit Speed DVR
	Record	Using the current camera to start recording
	Play/Pause	Play or pause when recording
	STOP	STOP playing
	Snapshot	Capture the video picture
	Zoom and Panorama	Enlarge or minimize the image viewing area
	Alarm	Enable or disable the alarm
	Settings	Display Settings dialogue



## 2.4G Wireless Receiver

	Help	Be on the screen with instant access to information about how to use Speed DVR detailed information and instructions
	Display area	Shows the status of the process of recording, such as the camera input source and recording time
	Volume Control	Drag the slider to increase or decrease playback volume. Click the speaker icon to mute
	Slipper block	Displays the current playback status. Drag the slider, the video moves to a specific location
	Backward and forward	Forward or backward Video
	Camera	Select a camera button, and watch or record the image
	Multi-Camera Mode	Support converting to single-or multi-camera display window
	Open the file	Open the recorded files, and play

### 2) Right -Click Menu

Speed DVR Right-Click Menu include following items:

**Play:** Start playing

**Pause:** Pause playback of recorded files

**Stop:** Stop playing

**Recording:** start or stop recording

**Camera:** Select a camera to play

**Play files:** Play recorded files

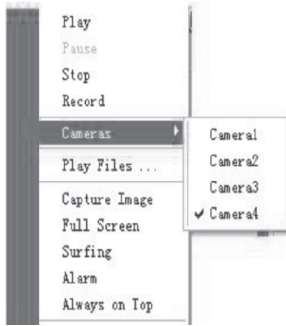
**Capture picture:** Capture video picture

**Full screen:** Playing video in full screen

**Multi-frame:** display 4 pictures in one screen

**Alarm:** Start or cancel alarm function

**Front-end display:** Window displays at the top of all windows



## 2.4G Wireless Receiver



**Scheduled Tasks:** Scheduled Tasks dialogue is open

**Settings:** Open the Settings dialogue

**Registration:** Software Registration

**Check for updates:** networking check for new versions

**Help:** Show Help Document

**Regarding:** the software version information and instruction

**Exit:** Exit Speed DVR

### 3) Accessing Speed DVR Help

Please refer to the software Speed DVR help. Help in the menu bar, click "Help, or click the Help button, or start the online help.

### 4) Using Speed DVR

Use Speed DVR custom to recording or alarming, viewing the recorded data, capture images, viewing images in a single model or a multi mode. The following sections describe the general function of Speed DVR.

### 5) Viewing Images

Speed DVR enables to view images in a single model or a multi mode .


How to view a single camera image:

On the menu bar, select "View" and then select a camera.



## 2.4G Wireless Receiver

How to view multiple camera images:



On the menu bar, select "View" and then select the "multi-camera" or click the "multi-camera" mode  button.



### 6) Recording Video

Use the Speed DVR to record the full motion video from the camera and audio, and use the MPEG-4 encoding for saving the real time video content directly to a designated area on the hard disk.

To record a video clip:

- Click <recording>  button. Speed DVR start recording the video from the current working camera.
- Click <stop>  button to stop reording.

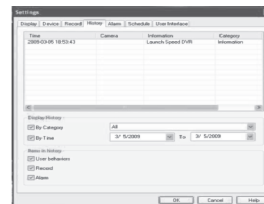
### 7) Viewing Event History

Speed DVR supports viewing, monitoring and analyzing events occurred when recording. Support view events in a particular category, such as all videos, notice, warning, information or errors. Support review all event history by date, by custom task testing activities (E.g., by time, alarm, motion recording video, or view the event). Supports enter search criteria, such as start date, end date, and time range.

To view the event history:

To select "Settings" and then select "History" on the menu bar, you can see A "History" dialogue box.

## 2.4G Wireless Receiver



### 8) Recording Video on Alarm or Motion Detection


Speed DVR activates the camera to start recording when alarm alert or motion detected.

To record video when motion is detected or in the event of alarm

- Select "alert" and then choose "Alert Settings." in the menu bar, you can see An "Alert Settings" window.
- Select camera.
- See Configure Alert Settings.



### 9) Still Image Capturing

Speed DVR Live also support you to capture a single image recording process.

Click  button of the control panel. The capture image will be saved in an appointed file. For more user guide information, please refer to Recording Properties page. The captured file will be named automatically.

### 10) Viewing Archived Videos

To view archive video in Speed DVR :

- Click "play"  Button enter into a "Recording" page
- Select a programmed name from Video list, then Click  Button.




## 2.4G Wireless Receiver

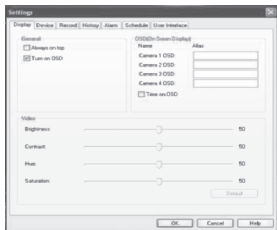
### 3. Configuring Speed DVR Settings

Please read the following content carefully to know how to setting Speed DVR.

#### 1) Accessing the Speed DVR Setup Page

Please carry out of the following step:


- Click  button.
- Select and click "setting" button in the right-click menu, a "setting" Dialog box will be open.



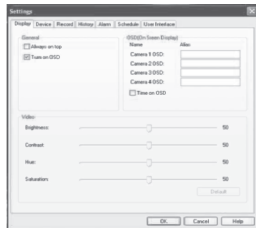
#### 2) Configuring Display Properties

"Display" property page enable you to configure the video mode of Speed DVR on the monitor or the screen

a. Please try one the following:

- Click  button .
- Select "setting" in the menu and then select "Options" .

You can see A Dialog box as follows:



b. In the "alias" field, enter the name of the camera connected to the computer.

## 2.4G Wireless Receiver

c. In the OSD box, select "time" in order to displays the current time when enable the OSD function of the Speed DVR .

d. Select "always on top" check box in order to make sure the speed DVR window is always displayed when you run the other programs.

e. Select "Open OSD" check box for displaying camera information, such as camera number, date and time in the "camera" window.

f. Drag the slider to adjust the brightness, hue, contrast, grayscale of video image, when you click the "Default" button, brightness, hue, contrast, grayscale settings will reset to its original position.

g. Click "OK" button.

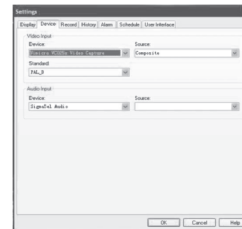
#### 3) Configuring Device Properties

In the "Device" property page for the cameras and audio equipment, select the appropriate parameters

a. Please do one of the following:

- In the "Settings" dialogue box, select "Device" tab.
- In the context menu, select "Settings" " Device " tab .

And find an "equipment" Properties dialogue box as follows:



b. In the "Video input device" drop-down menu, select the camera you want to use as surveillance cameras.

c. In the "video input format" drop-down menu, select the video standard format.

## 2.4G Wireless Receiver

- d. In the "video input source" drop-down menu, select "S-Video" or "composite" option. VCR, external DVD players and other playback devices need using "S-Video" or "complex".
- e. In the "Audio Input Device" drop-down menu, select Audio Devices.
- f. In the "Audio Input Source" drop-down menu, select the audio input source equipment.
- g. Click "OK"

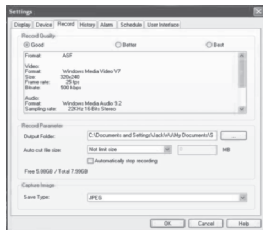
### 4) Configuring Record Properties

Speed DVR also support MPEG-4 recording format, Different specific **Configuration** and recording quality optional

- a. Please do one of the following:

- In the "Settings" dialogue box, select "Recording" option
- In the context menu, select "Settings" " Recording " tab.

You can find a "record" Properties dialogue box.



- b. By selecting a preset level ( "good", "better" or "best") to select the output quality of recorded programs. Quality levels associated with each recording settings appears on the right.
- c. Choose a good output folder for recording file
- d. To Set up automatic split the file size by selecting the tab when file is more than the fixed size ,The camera stop recording automatically", then when recording file exceeds the size of the file split automatically,

## 2.4G Wireless Receiver

it will stop recording.

- e. Select a crawl to keep the format of video images.
- f. Click "OK".

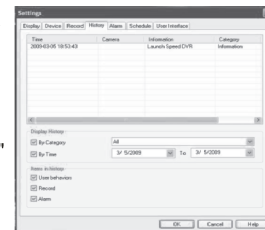
### 5) Configuring History Properties

In the "History" property page to view archived event log report.

- a. Please do one of the following terms:

- In the "Settings" dialogue box, select "History" tab.
- In the context menu, select "Settings" "History" tab.

Find a "history" Properties dialogue box as follows.



**Notes:** "History" Properties dialogue box on the table will show the event log report.

- b. In the "Show History by category" drop-down menu, select the types of events you want to view. If you choose one of all the categories, rather than a "full", only shows the items belonging to that category
- c. In the "Showing History by time" drop-down menu, specify the start date and end dates of the you want to view
- d. Select items which hope to be displayed in the history events
- e. Click "OK".

### 6) Configuring Alarm Setup

Speed DVR enables to connect the camera to the computer to set alarm parameters

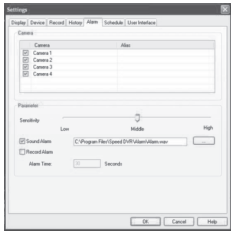
Speed DVR enables to set alarm parameters for the camera connected to the computer.

- a. Please do one of the following terms:

- In the "Settings" dialogue box, select "Alert Settings" tab.

## 2.4G Wireless Receiver

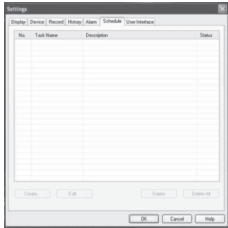
• In the context menu, select "Settings"  
"Alert Settings" tab.  
Find an "Alert Settings" dialogue as follows:



- b. Select a camera.
- c. Drag the slider to adjust the camera's sensitivity to "low", "Medium" or "high".
- d. Select "Sound Alarm" check box, and then click the "Browse" button to select a sound file.
- e. Select "Recording Alert" checkbox, and then enter a specific time of recording.
- f. Click "OK" button .

### 7) Create Schedule Task

Please switch to Schedule Task page in Settings panel, select "Create" button to create a schedule task, Select recording type, when time is over it will be switched to the specified channels automatically.



ITEM	FUNCTIONS
Create	Create a scheduled task, the following Settings dialogue box of Scheduled Tasks appears
Edit	Edit selected scheduled task, the following scheduled tasks Settings dialgue box appears
Delete selected file	Delete selected file
Delete All	Delete all files

## 2.4G Wireless Receiver



ITEM	DESCRIPTION
Name	Task name
Channel	Select recording channel
Type	Select to record the task, or play task
Start Date	Setting start date for the scheduled task
Start Time	Set start date for the scheduled task
Lasting time	Set the duration of the specified recording

### 4. Uninstall Speed DVR:

Start → Control panel → programs → uninstall a program → Find speed DVR and double click → uninstall

## VI. FAQ:

### 1. Receiver

- 1) Channel Indicator LED is not on:  
Please check if the power adaptor of the receiver is well connected, and check if the main power is on.
- 2) No image, or image received is not clear:
  - a. Please check if the camera is switched on;
  - b. To check if the distance between the camera and receiver is too far or if there is something electromagnetic shielding obstacles between the camera and receiver (such as the steel structure of the building will cause great obstacles to transmit signals)
  - c. Does the camera and receiver that corresponds to the frequency, (Notes: within the effective reception distance , it is not allowed to have two transmitters working on the same time, otherwise they will interfere with each other, resulting in poor image quality) , and check if the

## 2.4G Wireless Receiver

receiver antenna is installed in right place.

d. Please keep Receiver antenna away from the large electromagnetic shielding materials (such as metals) as far as possible.

e. The receiver will be interfered by high-power transmission signal which work on the same frequency as well as the working car radio surrounded.

### 2. Software

1) No image on the main window:

Please check if the LED display window character of this receiver corresponds with the emission frequency of camera, and make sure the camera is working correctly.

2) Image quality are not satisfactory:

Make sure your camera and Speed DVR Video standard settings are the same, please confirm whether the settings are correct.

3) Video Quality are not satisfactory:

Please refer to "Display" property page settings, change the video quality of the documents.

4) Video file is too large:

If you choose the high quality of AVI format video files for recording, which will take up a lot of disk space, you could select suitable quality to save video files.

### VII. Accessories:

- Receiver ..... 1pc
- Camera ..... 4pcs (optional)
- AV cable ..... 1pc
- USB cable.....1pc
- Driver CD..... 1pc
- Power adapter of Camera(DC12V/500mA).....4pcs (optional)
- Power adapter of Receiver(DC5V/800mA) .....1pc
- User manual.....1pc
- Warranty card ..... 1pc

## Warranty card

This card is the important evidence to receive our service, please keep it well.

- ① When used normally, the following services can be offered:
  - A. Replacement for functional disorder within 3 months.
  - B. Repair free of charge for functional disorder within 1 year.
  - C. Service for all the life( only charge material cost and freight if the warranty date expires.)
- ② The following conditions are excluded for warranty service ( repairable if needed, but will charge material cost and freight.)
  - A. Malfunctions or damages by mistaken installation or using the products exceeding the limited operating conditions.
  - B. Malfunctions or damages by self disassembled or repair and any other misuse.
  - C. Spare parts missed, artificial damages
  - D. Unmatched products.
- ③ Repair cycle Excluding the shipping dates, the Quality Department will submit the examine report in one day on receipt of the products, the products on the quantity under 50sets will be repaired in 3 days after customers signed back the test report.

**Product name:** \_\_\_\_\_

**User's name:** \_\_\_\_\_

**User's address:** \_\_\_\_\_

**Tel:** \_\_\_\_\_ **Zip code:** \_\_\_\_\_

**Purchase date:** \_\_\_\_\_

**Invoice No.:** \_\_\_\_\_

**Distributor:** \_\_\_\_\_

**Contact person:** \_\_\_\_\_ **Tel:** \_\_\_\_\_

**Dealer:( Valid by sealed)**